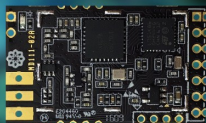


LoRaWAN™ 模块

产品介绍

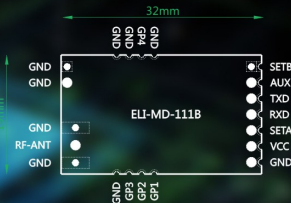
LoRun®模块是一款超低功耗、超长距离传输的物联网通信模块，采用无线射频LoRa®调制技术、LoRaWAN™无线传输协议，便于快速组建物联网网络，用户集成或连接该模块即可实现便捷的自组网或连入物联网网络（配合物联网网关使用），模块已内嵌自主知识产权网络协议，可实现数据传输、监控或智能管理等功能。目前广泛应用于智慧城市、智慧社区、智能交通等各领域。



ELI-MAD-111B

产品特点

- 最远15Km的超长传输距离
- LoRa扩频调制方式
- 最低待机电流2uA
- 最高灵敏度到-143dBm
- 整机功耗 ≤ 0.5W
- 高效的的循环交织纠错编码



产品规格	详细规格
工作频率范围	433MHz, 470MHz, 510MHz, 780MHz, 868MHz, 915MHz
调制技术	LoRa 调制& FSK
RFIC	SX1278
待机电流	2uA
接收电流	16mA
通道带宽	125KHz, 250KHz, 500KHz 可配置
射频功率	27dBm (400mW) (Typical)
接收灵敏度	-121dBm -143 dBm
最大发射功率	20dBm
传输功率	0.27 - 300kbps
整机功耗	≤0.5W
Io接口	GPIO *3, UART
尺寸	32*19*2.5mm
重量	2.0g
工作温度范围	-40°C -- 80°C

购买或咨询更多信息欢迎联系售前工程师
+86 027-87176669-803

www.easylinkin.com

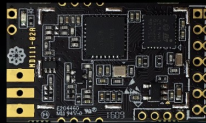


关注微信公众号

LoRaWAN™ Module

Product Introduction

LoRun[®] module is a highly integrated module with ultra-low power consumption, ultra-long transmission distance, using radio frequency LoRa modulation technology, LoRaWAN wireless transmission protocol, easy to set up network. With the use of LoRun gateway, Users integrating or connecting the module can achieve Ad hoc network or connected to the network, the module has embedded independent intellectual property rights network protocol, can realize data transmission, monitoring or intelligent management and other functions. Currently widely used in the Smart City, Smart Community, Smart transportation and other fields.



ELI-MAD-111B

Product Feature

- Up to 15Km transmission distance
- LoRa spread spectrum modulation
- Minimum 2 μ A standby current
- Up to -143dBm sensitivity
- Power consumption \leq 0.5W
- Efficient cyclic interleaving error correction coding



Specification	Description
Frequency band	433MHz, 470MHz, 510MHz, 780MHz, 868MHz, 915MHz
Modulation technology	LoRa 调制 & FSK
RFIC	SX1278
Standby current	2 μ A
Receive current	16mA
Maximum number of channels	125KHz, 250KHz, 500KHz 可配置
RF power	27dBm (400mW) (Typical)
Receiving sensitivity	-121dBm -143 dBm
Maximum transmit power	20dBm
Transmission rate	0.27 - 300kbps
Power consumption	\leq 0.5W
IO interface	GPIO *3, UART
Host size	32*19*2.5mm
Total weight	2.0g
Operating temperature range	-40°C -- 80°C

